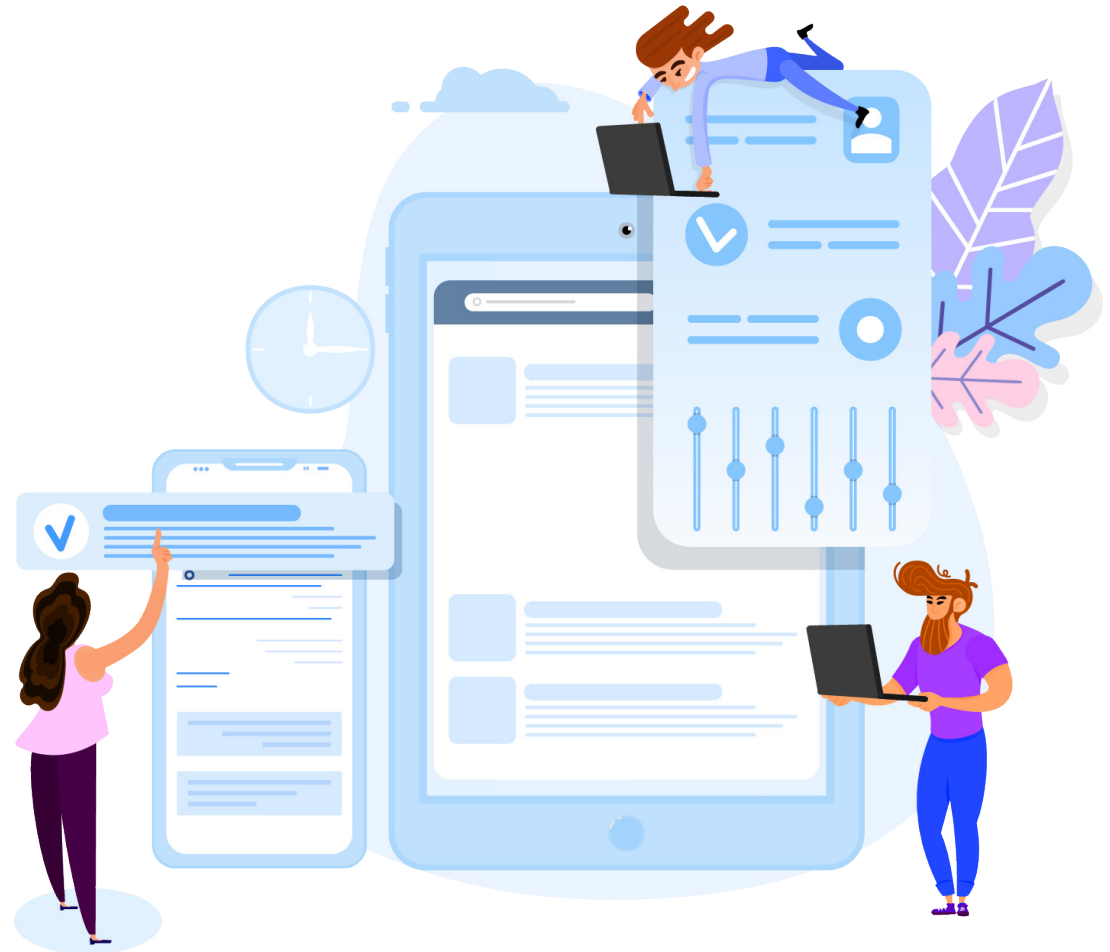


UX/UI Design

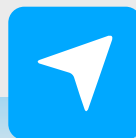
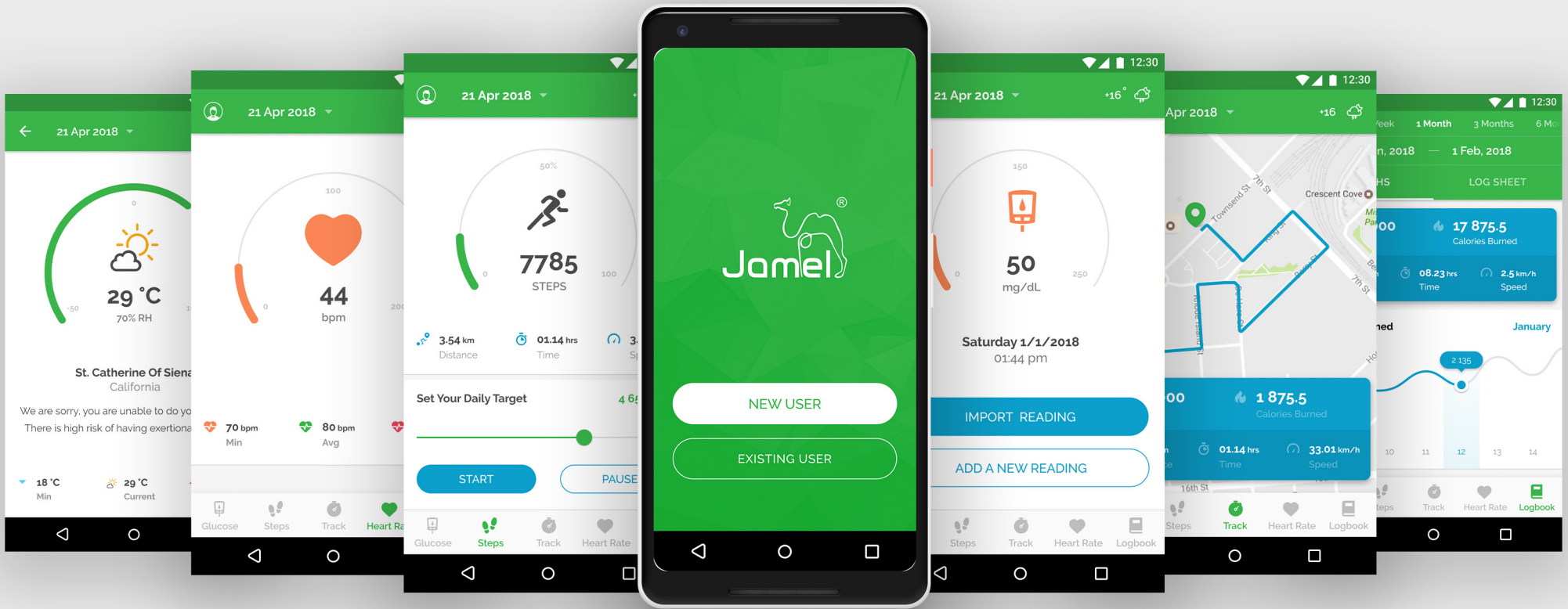
Website Landing Page . Mobile App .
Watch App . Responsive Web Design

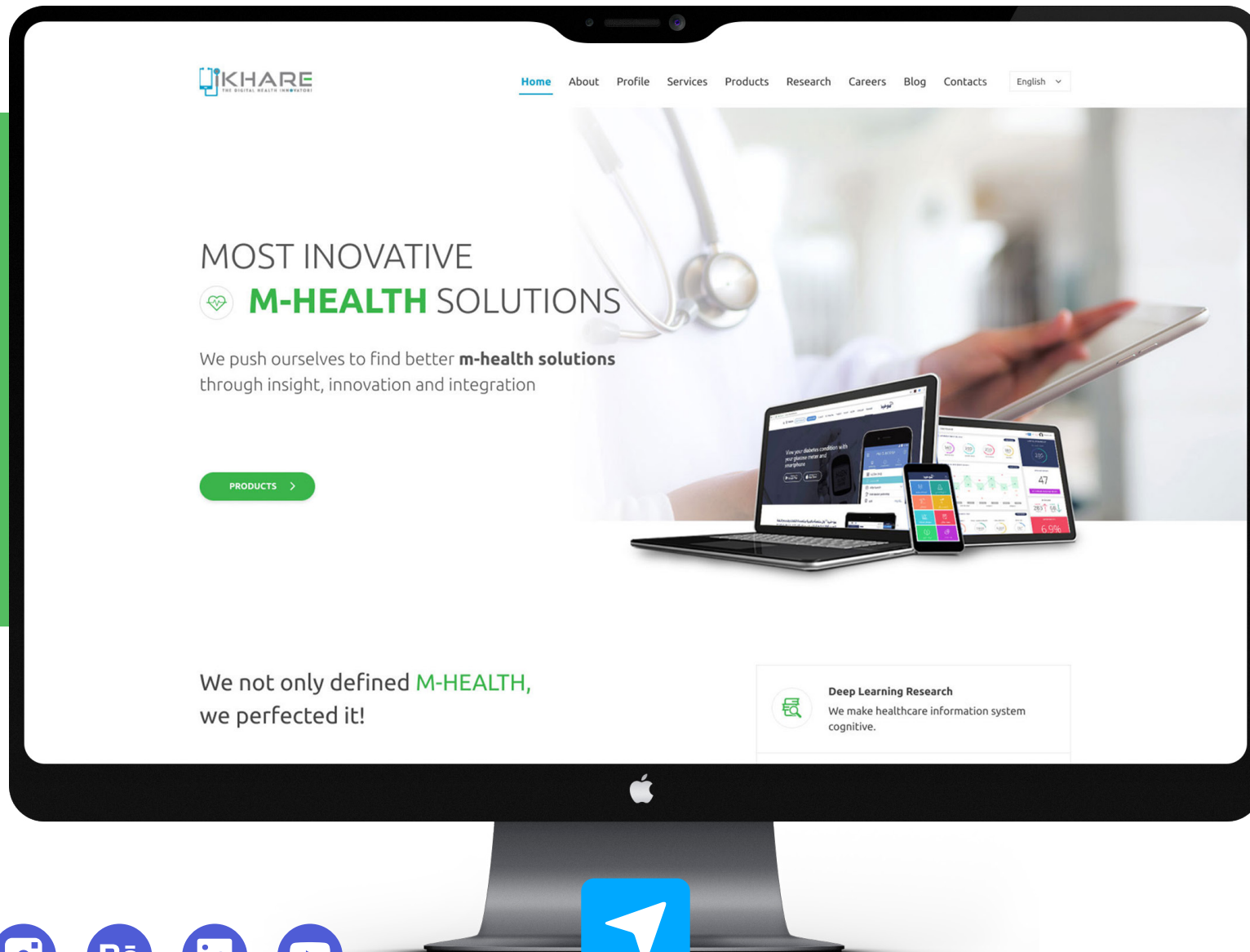


goBlueDigital.com



GET YOUR QUOTE NOW

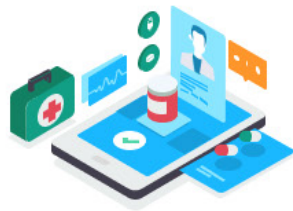




From Idea to Being

Smartphones, state-of-the-art medical devices, and big data technologies now enable us to collect a massive amount of real-time data and share it with someone else sitting on the opposite side of globe with just a tap.

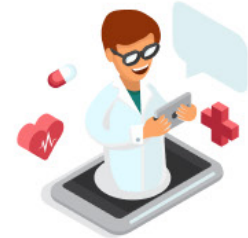
iKhare foresaw this convergence in 2003



iKhare realized it could become the platform for the next generation of nimble m-health technologies.



At iKhare, we benefit enormously from our experience to span a wide range of services.



These services includes software and hardware development for m-health, e-health, and tele-health solutions.

Colors

#54bd61

#149fcd

#de5c5c

#2e353c

#7d8ca3

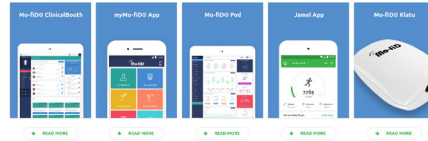
Font

Ubuntu Family



Products

Our mission is to develop tools that will improve the quality of life for each and every one of our customers. All of our applications are designed with a focus on what the customer needs to manage their health and what can make the process as easy as possible for them. Our products also benefit from all the knowledge and experience we have gained over the last fifteen years we have been in the business of providing cutting edge of mhealth technologies.



Welcome to the Future, the Mobile Technology Revolution

We were pioneers in the concept and development of high-tech solutions specifically designed for those who suffer from chronic diseases such as diabetes. This vision was sparked back in 2003 and now, fifteen years later, we still maintain the same enthusiasm and commitment to innovation while benefiting from the advantage that only time and experience can provide.

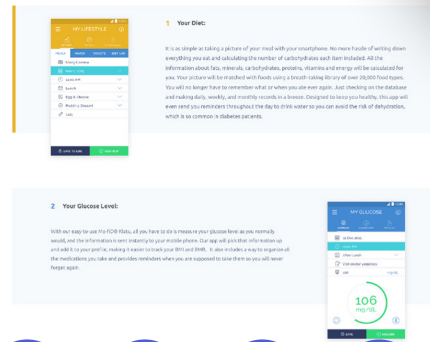
Mo-FiD® Klatu

This device uses state-of-the-art Low Energy Bluetooth technology that fits in the palm of your hand. It is simple to use and will become the connection between your phone and your favorite diabetes meter, which makes tracking your insulin dose and carbohydrate intake a breeze. It also records, just measure your blood sugar levels and this Bluetooth transmitter will send that information straight to your smartphone. No need to worry about losing your data or forgetting to write it down. All connections are absolutely seamless and all of your data is stored in the cloud for easy access and easy access.

Simple, fast, accurate and everlasting
- that's Mo-FiD® Klatu.

How myMo-FiD® App Works?

The brain of the whole system is the incredibly easy-to-use myMo-FiD® App. It is an all-in-one integrated diabetes self-management solution that allows users to keep track of everything that goes on with their body's glucose levels at a glance. It manages data from the three most important aspects to bear in mind:



MOST INNOVATIVE M-HEALTH SOLUTIONS

We push ourselves to find better m-health solutions through insight, innovation and integration

PRODUCTS

We not only defined M-HEALTH, we perfected it!

We are specialized in developing innovative mobile health solutions based on two elements of extensive research and engineering knowledge of innovation.

Our algorithm is creating a standard platform for mobile health data analysis using deep learning and big data cognitive technologies.

LEARN MORE

Deep Learning Research
We make healthcare information system smarter

Healthcare Big Data
We find ways to turn healthcare big data for

Chronic Diseases
Our mobile health solutions for people with chronic diseases

Span of expertise



Advanced Health Data Analytics

Our algorithms of scientific and engineering knowledge and experience in creating innovative and emerging mobile health solutions and

m-Health Solutions

We build on the innovation of scientific and engineering knowledge and experience in creating innovative and emerging mobile health solutions and

Digital Health Technologies

We build on the innovation of scientific and engineering knowledge and experience in creating innovative and emerging mobile health solutions and

Products

We are bridging the latest advancement in Big Data technologies with advanced healthcare solutions for chronic disease management by using our integrated patient-to-clinician systems.

Our solutions enable clinicians and healthcare providers to save their patients' health data in the most best data base. Specialized in using predictive modeling and integrates Big Data tools using the experience of over 200 data scientists and clinical clinical intelligence. Our solutions are for truly being integrated for leading mHealth systems, commercial partners and health and human services agencies.

LEARN MORE

Research

Of our people in the following three fields our advancement has come from a research in the field of machine learning and big data. The use of machine learning and big data is a key to the success of our research and development. We are currently working on the development of machine learning and big data. We are currently working on the development of machine learning and big data. We are currently working on the development of machine learning and big data.

Innovation

Innovation in health is the key to the success of our research and development. We are currently working on the development of machine learning and big data. We are currently working on the development of machine learning and big data. We are currently working on the development of machine learning and big data.

Latest blog posts



About Us

The convergence of smart technology and digital health company for the healthcare sector. A passionate team dedicated to improving the quality of life for our customers.

From Idea to Being

Smartphones, state-of-the-art medical devices, and big data technologies have enabled us to collect a massive amount of real-time data and share it with someone else sitting on the opposite side of the globe with just a tap.

Khare foresee this convergence in 2003

Khare realized it could become the platform for the next generation of mobile mhealth technologies.

All software, we benefit enormously from our experience to span a wide range of services.

These services include software and hardware development for mobility, health, and life-health solutions.



Our Expertise

We have the rich capabilities in developing diabetes smart self-management solutions customized for our patients. In particular, our Mo-FiD™ mHealth device helps patients capture blood glucose readings from a wide range of commercially available glucose meters, manage their daily food, and keep a track of their activities – all at the distance of a tap.

We have our systems backed with broader research and innovation in the high-resolution to help patients with diabetes control their blood sugar levels, thus helping them avoid any future complications.

Our diabetes smart self-management system harnesses the power of deep learning and big data analytics to assist patients manage their diabetes with the aim of delivering better health, better lives.

Your Privacy, Our Priority

We are passionate to share our expertise in designing and implementing compliant mHealth solutions. We guarantee the safety and privacy of our users' data with our high-level security interoperability standards.

We are glad to have you. Join our vision!

Home About Profile Services Products Research Careers Blog Contacts

CONTACT

address

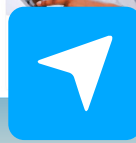
email

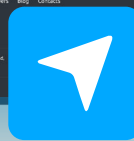
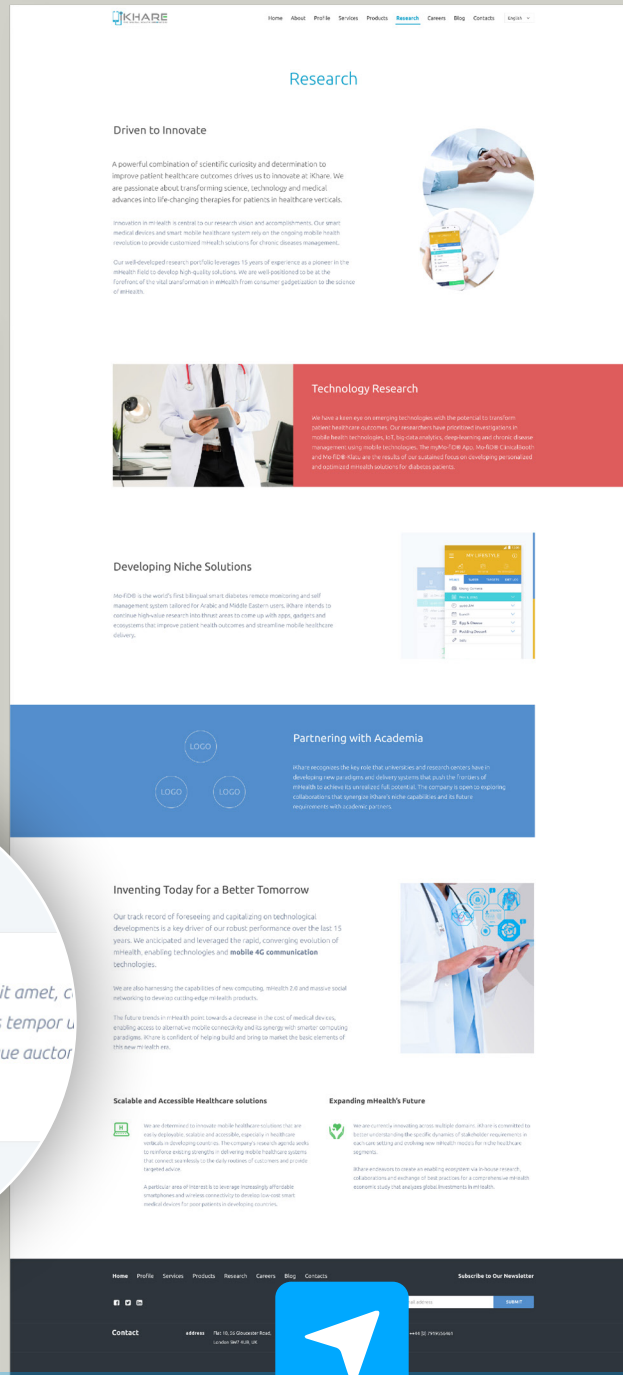
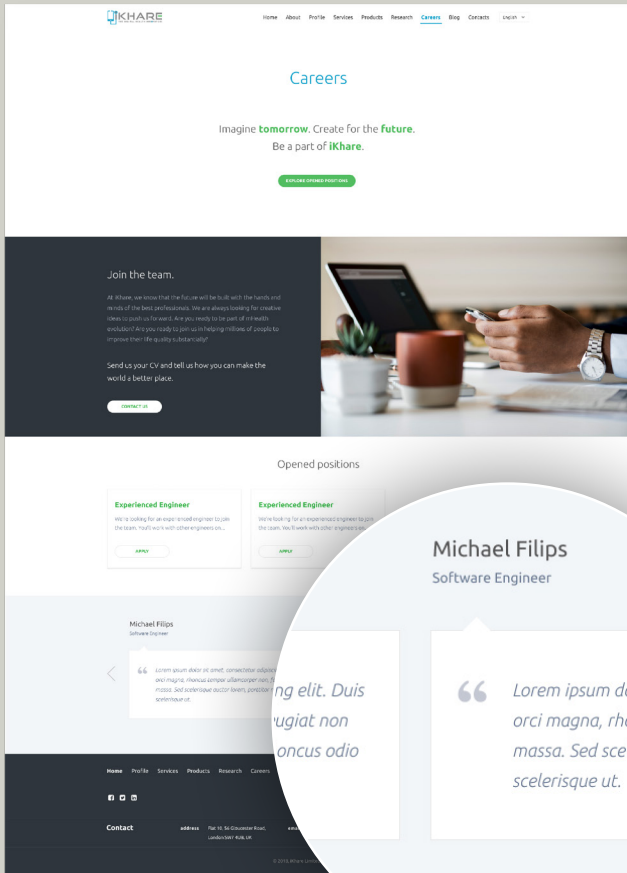
phone

social

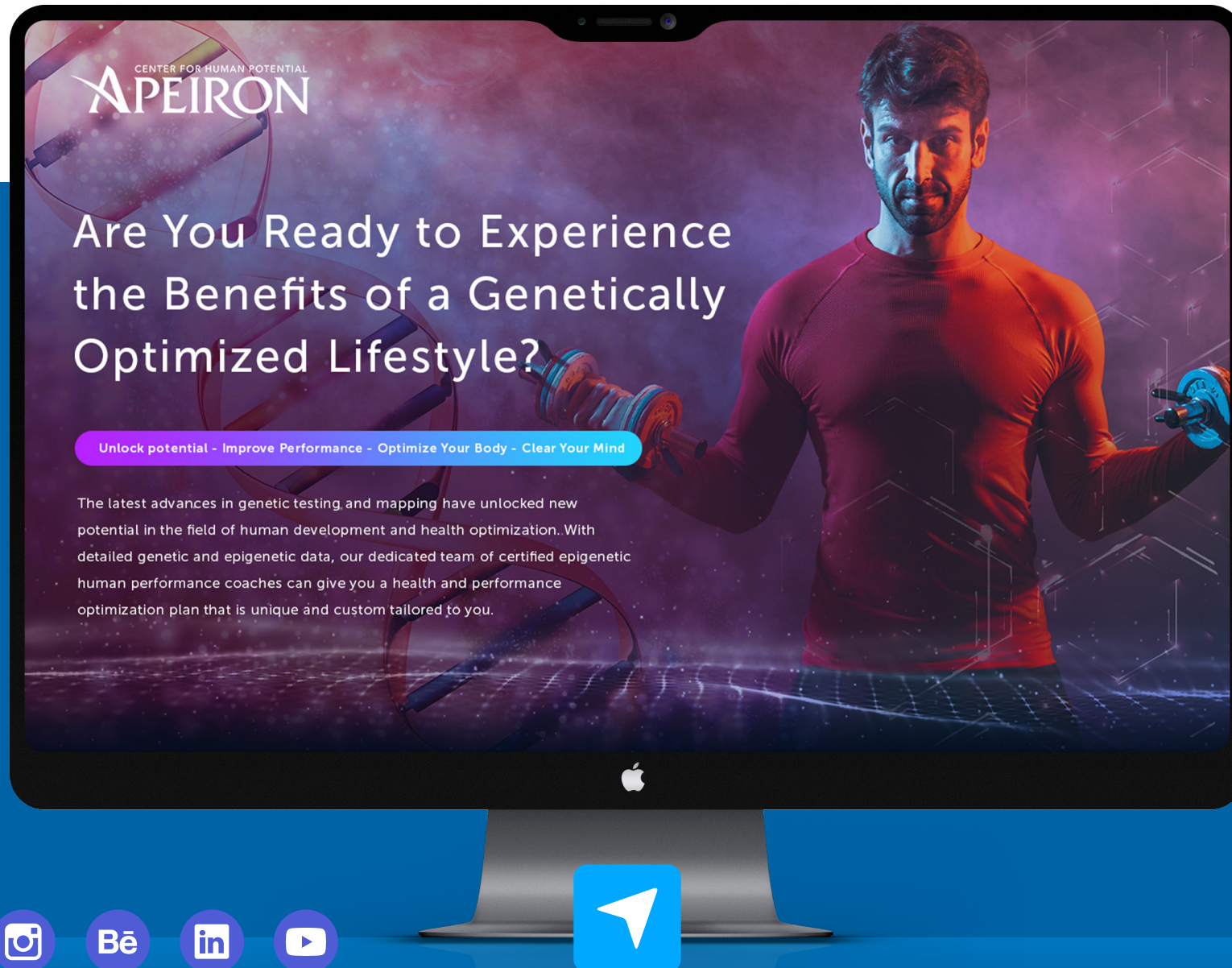
subscribe

button









How It Works!

Epigenetic Performance Coaching is the key to unlocking your limitless genetic potential. Discover how this new paradigm of health and wellbeing is the true cutting edge of transformation and optimization. We combine the latest in genetic and epigenetic science with physiology, biochemistry, brain/body performance, and other integrative factors for personalized and precise solutions so you can access your limitless potential to flourish.



Your Personal Blueprint

Using a simple cheek swab, you submit your DNA specimen. In approximately 2 weeks, you will receive your raw genetic data covering nearly 750,000 genetic variants. This is your data. It is not shared or sold. This is YOUR raw data and you can use it to do your own research as well.



Personalized Reports

You get an easy-to-read report that covers everything you need for Optimized Living or Performance. These reports look at hundreds of genetic variants that specifically apply to your health and lifestyle as well as the epigenetic expressions created by your environment. This data can then be interpreted by your personal Apeiron Certified Epigenetic Performance Coach.



Coach Review/Action Plan

Here is the real value of this offer that you will not be able to get anywhere else. Not only do you get your raw data and a detailed health and performance report, you also get one hour with one of our Epigenetic Performance Coaches. Information without an action plan is simply information. Your coach can provide the next steps to begin your optimization process and for a limited time, you can extend this with 4 more calls, for just \$200.

How You Can Find Your Path To Precision Medicine

1 Take and Ship Your Sample



2 Your Personal Epigenetic Coach



The real value of having your personal genetic blueprint is having an action plan to guide your path. Our coaches have over 100 hours of training in genetics and epigenetics and they can interpret your data with this added variable of epigenetics to create action items that will guide your path to optimized performance.

3 One Hour of 1 on 1 with Your Coach

Hear From Real Clients And Learn About Their Results!

Meet A2 A3

worked to keep himself healthy. He controlled his diet, took recommended supplements and worked out, but just wasn't seeing the results that he knew he could achieve. Listen to the amazing progress he achieved in a few short weeks after getting his epigenetic testing. He worked with one of our certified epigenetic human performance coaches to implement the knowledge he gained.

When you know the unique factors of your personal Human Performance Blueprint, you can unlock the secrets of your own potential and become the optimized person you are meant to be.



Are You Ready to Experience the Benefits of a Genetically Optimized Lifestyle?

Unlock potential. Improve Performance. Optimize Your Body. Clear Your Mind.

The latest advances in genetic testing and measuring have unlocked new potential in the field of human development and health optimization. With detailed genetic and epigenetic data, our dedicated team of certified epigenetic human performance coaches can give you a health and performance optimization plan that is unique and custom tailored to you.

Go Further, Get More!

Add 4 Health and Performance Optimization Calls To Your Package

So that you can fully experience the benefits of epigenetic performance and a genetically optimized lifestyle, you'll be able to add an additional 4 calls with your certified Apeiron Epigenetic Coach for just \$200. That's 4 hours of detailed epigenetic coaching to discuss, develop and enhance your blueprint with even more data, as well as advice and support from your coach so that you know you're implementing your lifestyle in the most effective way possible. Just tick the box on your order form to claim your discounted coaching calls!

Optimized Performance Blueprint

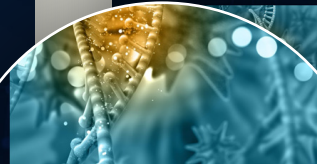
Take your life to the next level. With this blueprint you will receive everything from the Optimized Living Blueprint and also get an extra 35 pages of genetic data detailing your Environmental and Detoxification, Athletic Performance and Hormone patterns.

~~\$947~~ **\$697**

ORDER NOW

Includes a 1.5 hour Genetic Blueprint Interpretation call with a Apeiron Certified Epigenetic Performance Coach.

What Does A Genetically Optimized Lifestyle Mean?



Optimized Performance

Whether you're seeking to lose weight, or gain an extra athletic edge, you'll learn exactly what your body needs to go faster, stronger and harder safely and sustainably, all while improving your long-term health.

Improved Focus and Attention

By optimizing your sleep patterns and getting the right kind of nutrients and supplements you can experience dramatic improvement in cognitive function, mental clarity and energy. Improved body health has even been shown to reduce fatigue, mind racing and the symptoms of chronic stress that can hold us back.

Sustainable, Healthy Plans

By designing your optimization plan with one of our epigenetic performance coaches who truly understand how your genetic make-up influences your health and life, you can be confident that you are giving your body, and mind, what they need. No more crash diets or unrealistic, unsustainable exercise plans, you'll get an effective personalized plan for a direct path to improved health and well-being.

HERE'S WHAT TO DO NOW

You're just a few clicks away from getting on the path to truly personalized, optimal health.

Step 1: Pick Your Report

Step 2: Send Us Your Sample

Step 3: Schedule Your Coaching Call

Optimize Your Performance Blueprint

Receive an extra 35 pages of genetics. You get all the information from the Living Blueprint report plus:

- Environmental and Detoxification
- Athletic Performance
- Hormones

The first step to achieving fully fine-tuned health and optimized physical and mental performance.

ORDER NOW

FAQs

Lorem Ipsum is simply dummy text of the printing and typesetting industry.

Lorem Ipsum is simply dummy text of the printing and typesetting industry. Lorem Ipsum has been the industry's standard dummy text ever since the 1500s, when an unknown printer took a galley of type and scrambled it to make a type specimen book.

Lorem Ipsum is simply dummy text of the printing and typesetting industry.

Lorem Ipsum is simply dummy text of the printing and typesetting industry. Lorem Ipsum has been the industry's standard dummy text ever since the 1500s, when an unknown printer took a galley of type and scrambled it to make a type specimen book.

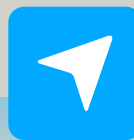
Lorem Ipsum is simply dummy text of the printing and typesetting industry.

Lorem Ipsum is simply dummy text of the printing and typesetting industry. Lorem Ipsum has been the industry's standard dummy text ever since the 1500s, when an unknown printer took a galley of type and scrambled it to make a type specimen book.

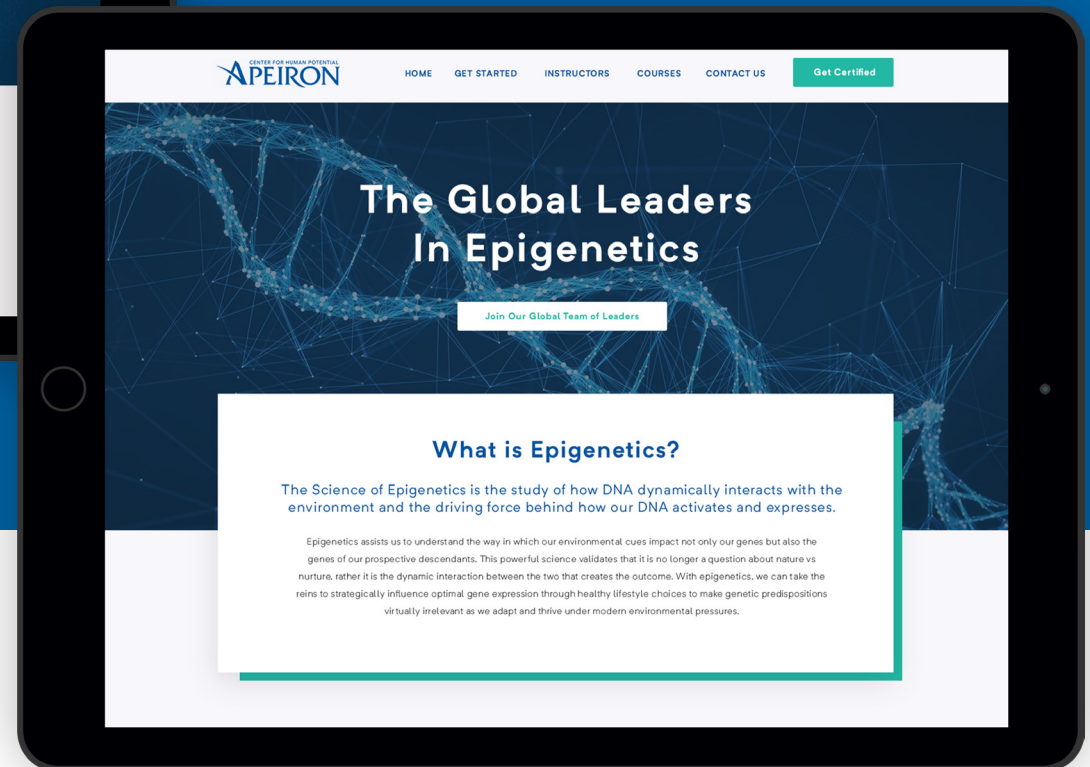
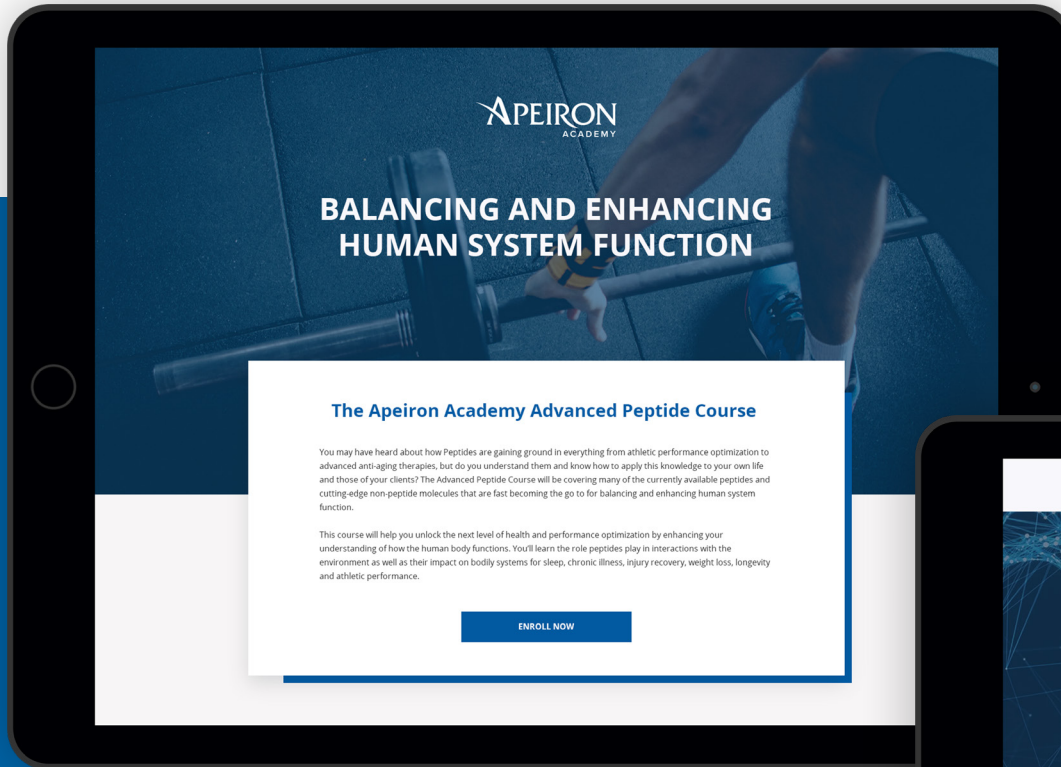
Lorem Ipsum is simply dummy text of the printing and typesetting industry.

Lorem Ipsum is simply dummy text of the printing and typesetting industry. Lorem Ipsum has been the industry's standard dummy text ever since the 1500s, when an unknown printer took a galley of type and scrambled it to make a type specimen book.

Copyright © 2019 - Apeiron Academy Online - All Rights Reserved









BALANCING AND ENHANCING HUMAN SYSTEM FUNCTION

The Apeiron Academy Advanced Peptide Course

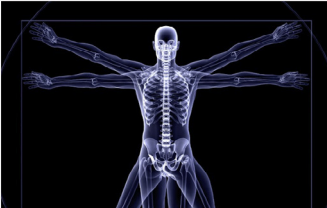
You may have heard about how Peptides are gaining ground in everything from athletic performance optimization to advanced anti-aging therapies, but do you understand them and know how to apply this knowledge to your own life and those of your clients? The Advanced Peptide Course will be covering many of the currently available peptides and cutting-edge non-peptide molecules that are fast becoming the go-to for balancing and enhancing human system function.

This course will help you unlock the next level of health and performance optimization by enhancing your understanding of how the human body functions. You'll learn the role peptides play in interactions with the environment as well as their impact on bodily systems for sleep, chronic illness, injury/recovery, weight loss, longevity and athletic performance.

ENROLL NOW


We Provide Expert Training To:

Healthcare Professionals, Wellness Coaches, Personal Trainers, and more to help them unlock the next step in their own health and their careers.




An In-Depth Curriculum

Our curriculum is THE cutting edge when it comes to this new forefront in human performance optimization and will build your knowledge step-by-step.




Understanding Peptides

There are 1000's of current peptides that are undergoing exponential growth. In this module we introduce you to the concept of peptides; how they work, how they create precise responses as well as their limitations.



Growth Hormone, GHRH and GHRPs

This section is designed to give you a deeper understanding of the growth hormone system. It is not a simple system and since growth hormone, GHRH, and GHRPs play such a foundational role in peptide therapies, it made sense to have an entire module dedicated to helping you fully understand this complex system.



Unbalanced to Homeostasis


The Unbalanced module is addressing conditions where the human system is out of homeostasis. This can range from chronic illness to acute injury. We address the use of peptides in facilitating correction of the underlying imbalance in order to bring the human system toward a state of homeostasis.



Homeostasis to Optimized


Moving from the unbalanced state into homeostasis is very satisfying and powerful, but is only the first step in the journey to achieving the full expression of your personal potential. This module will focus on the intermediate stage of the process where we take the system from homeostasis into optimized.

ENROLL NOW



Optimized to Enhanced

Enhancement is where the real fun of the journey really begins. As we move the system from optimized to enhanced, the human system is boosted by modern technology and scientific advancements that are able to create client outcomes that were previously unattainable.




Our Mission

We created the Apeiron Academy to be the educational platform for a new paradigm in human performance and potential, one that places us as the Master of our destiny and the architects of evolution. A precision, whole systems genomic and epigenetic approach to designing the human system has enormous clinical applications in the emerging field of human potential optimization.

We now have the power to evaluate all aspects of an individual's life: their medical and family history, occupation, lifestyle and the environments they function in. By leveraging this data along with real-time markers from sensor and precision medicine, we can enhance gene expression with precision and how individual choices affect their health and how we are interactive.

The interplay of these factors creates a complex, mysterious system of interactions that we are just beginning to understand.



Connect with Academy Team

Connect with us through the contact form or email Apeiron.Academy to schedule a call or visit our website to answer your questions about the Apeiron Academy Advanced Peptide Course or.

ENROLL NOW

To get access to this first in the

We Provide Expert Training To:

Healthcare Professionals, Wellness Coaches, Personal Trainers, and more...

Genetic Interpretation

Our epigenetic coaches are trained in the interpretation of nearly 500 genetic variants. Using a proprietary genetic array and lifestyle specific templates they are able to create bio-specific plans for each individual.

Epigenetic Lifestyle Coaching

Epigenetics is the key to change. Our epigenetic coaches are trained in the evidence based science of epigenetics and understand how to elicit changes in gene expression to achieve optimal outcomes. The concept of "Smarter-Faster-Stronger" is a key tenet.

Peak Performance Coaching

Our epigenetic coaches are trained in guiding the human system to new levels of performance through lifestyle interventions that produce specific outcomes. The concept of "Smarter-Faster-Stronger" is a key tenet.

Neuro & Biofeedback

By evaluating the human nervous system with the latest technology we open a window allowing us to create optimal homeostatic balance that can lead to further enhancement. Our epigenetic coaches are trained to leverage this.

Environmental Design

An often neglected, yet highly impactful piece of human optimization. We educate our epigenetic coaches on understanding the human exposure and how to leverage environmental design to create optimal outcomes.

Business Development

Most training programs provide the training and then leave you on your own. We help to foster successful coaches long after the training is completed. Our success is interdependent on partnering with our epigenetic coaches.

Join Our Global Team of Leaders

1 Low Price – 5 Levels of Certification + Access to Our Live 2 Day Training – Enroll Today

[Get Certified](#)

A Leading Team to Help You Succeed

- 5 Levels of Specialized Certifications for one affordable price
- Business Training
- Clinical Support
- Mentoring
- Advertising & Marketing Materials
- Guest Interviews on Apeiron Podcasts, Video and Blogs

Residual Income Streams

- Affiliate Programs
- Supplement Sales
- Advanced Labs
- 3.6 & 12 Month Coaching Programs
- Bio Technology

Genomic and Epigenetic Solutions

Proprietary Genetic V5 Array Testing Over 740,000 SNPs (840,000 markers) (1 & me)
Epigenetic Reports and Certifications or:

- Nutrition Diet
- Weight loss
- Sleep
- Neurotransmitters
- Supplementation
- Performance
- Dewie
- Leadership
- Homonee

[CLICK TO VIEW A SAMPLE REPORT](#)

HUNGER & SATIETY

Appetite is a combination of hunger response and satiety. Many scientific studies have been undertaken to identify genomic variations that contribute to these aspects of eating. What we have discovered is that it is a complex interaction between many systems:

- Brain neurotransmitters (dopamine & serotonin)
- Intestinal peptides
- Signals from fat cells

Identifying which of these components can potentially be contributing to a non-desirable outcome can provide the guidance for the individual to create an optimal outcome.

INTERPRETATIVE NOTES:
Good genetics for appetite signaling and processing. You should interpret hunger and satiety signals accurately. Low risk for obesity.

GENETIC DATA

GENE	GENO TYPE
ADIPOQ (1)	AG
ADIPOQ (2)	GG
FTO	GG
MC4R	GG
ANKK1	GG
COMT	GG
DRD2	AA
NMB	GG
FTO	TT
HTR2C	CC
GHSR(1)	CC
GHSR(2)	GG
POMC	GG

LOW HUNGER

TYPICAL SATIETY

The Global Leaders In Epigenetics

[Join Our Global Team of Leaders](#)

What is Epigenetics?

The Science of Epigenetics is the study of how DNA dynamically interacts with the environment and the driving force behind how our DNA activates and expresses.

Epigenetics assists us to understand the way in which our environmental cues impact not only our genes but also the genes of our prospective descendants. This powerful science validates that it is no longer a question about nature vs nurture, rather it is the dynamic interaction between the two that creates the outcome. With epigenetics, we can take the reins to strategically influence optimal gene expression through healthy lifestyle choices to make genetic predispositions virtually irrelevant as we adapt and thrive under modern environmental pressures.

Become an Epigenetic Coach

Apeiron is the globally recognized leader in genomics and epigenetics. We are advancing human potential, precision and performance through our unique systems based, bio-individualized approach.

Transform Your Business

Scale Virtually. Change Lives Globally
Epigenetic Coaching allows you to uniquely leverage your passion and talents in a growing field with the leaders in the industry.

Precision — Performance — Potential

Epigenetic Performance Coaching is the key to unlocking your limitless genetic potential.

Discover how this new paradigm of medicine is the true cutting edge of transformation and health optimization. Taking a whole systems approach, puts you the client at the center of care. We combine cutting edge genetic and epigenetic science with physiology, biochemistry, brain/peak performance, hormones, lifestyle and positive psychology for personalized and precise solutions so you can access your limitless potential to thrive.

Precision

Apeiron is the globally recognized leader in genomics and epigenetics. We are advancing human potential, precision and performance through our unique systems based, bio-individualized approach.

[Get Certified](#)

Performance

Apeiron is the globally recognized leader in genomics and epigenetics. We are advancing human potential, precision and performance through our unique systems based, bio-individualized approach.

[Get Certified](#)

Potential

Apeiron is the globally recognized leader in genomics and epigenetics. We are advancing human potential, precision and performance through our unique systems based, bio-individualized approach.

[Get Certified](#)

Our Mission

Welcome to the global TRIBE that is Apeiron.

We created the Apeiron Academy to be the educational platform for a new paradigm in human performance and potential, one that places us as the Master of our destiny and the architects of evolution. A precision, whole systems genomic and epigenetic approach to designing the human system has enormous clinical applications in the emerging field of human potential optimization.

We now have the power to evaluate all aspects of an individual's life: their medical and family history, occupation, lifestyle and the environments they function in. By leveraging individual systems diagnostics to include genomics along with real-time markers from cancer and mobile data we can provide personalized lifestyle interventions to optimize and enhance gene expression within the human system. This new precision offers high specificity on health, tracks how individual choices affect health now and how that translates to the future. It also provides new insights about how we are interacting with our environment, in real time and in real detail.

The interplay of our genes and our experiences, of nature and how it interacts with nurture, has now moved from the mysterious to the knowable. The game-changing Science of Epigenetics assists us to create personalized and precise optimization strategies by taking the reins of gene expression to adapt and thrive under modern environmental pressures.

Each Testimonials

Karen Wojciechowski

>Lorem Ipsum is simply dummy text of the printing and typesetting industry. Lorem Ipsum has been the industry's standard dummy text ever since the 1500s, when an unknown printer took a galley of type and scrambled it to make a type specimen book. It has survived not only

Karen Wojciechowski

>Lorem Ipsum is simply dummy text of the printing and typesetting industry. Lorem Ipsum has been the industry's standard dummy text ever since the 1500s, when an unknown printer took a galley of type and scrambled it to make a type specimen book. It has survived not only

[Join Our Global Team of Leaders](#)

Join Our Global Team of Leaders

Connect with us through the contact link at Apeiron Academy to schedule a call to determine if Epigenetic Human Performance Coaching is a great fit for you.

[Click Here](#) and then Decide if You Want One Low Payment of **\$3997** or a Payment Plan to Fit Your Budget. We Make it Easy for You to Say YES to Your Success to Enroll Today.

[Join Our Global Team of Leaders](#)

© 2016-2018 Apeiron-Zahl Corporation. Privacy Policy

Dr. Keesha
FREEDOM TO FEEL FABULOUS

What If 2019 is Your Year For Manifesting Abundance?

- ✔ What would REAL financial freedom look like?
- ✔ That means joy under all circumstances, every day. Is that possible?
- ✔ Let's add ENDLESS vitality and health too...
- ✔ AND infinite joy and the love yoVu've always dreamed of!

Hes! I want to commit to limitless vitality, health, joy, financial freedom, and more...

Your Email

YES! I COMMIT TODAY



What If 2019 is Your Year For Manifesting Abundance?

- What would REAL financial freedom look like?
- That means joy under all circumstances, every day. Is that possible?
- Let's add ENDLESS vitality and health too...
- AND infinite joy and the love yoV'u've always dreamed of!

Hes! I want to commit to limitless vitality, health, joy, financial freedom, and more...

Your Email

YES! I COMMIT TODAY



Learn skills to overcome self-limiting beliefs and manifest abundance in your love life, finances, health, and professionally!

→ Join Dr. Keesha and your tribe and bring in the New Year with Intention and Purpose. When one of us succeeds we lift the others up. Abundance is not about money, it relates to everything.

Usually priced: \$197

Special offer:

\$ 97

SUBMIT NOW

Here's What You Will Get:



How to videos



Free gift



Support email



A mind-stick with



Bonus material



Access to me for questions

Create Abundance and Begin Manifesting in All Areas of Your Life:



Financial



Emotional



Physical



Spiritual



Mental



What do you want
Let's create it together!

Join Dr. Keesha and

Special offer: \$ 97

Want 2019 to look like
create it together!

Join Dr. Keesha and manifest abundance in 2019!

CLICK HERE! →

About Dr. Keesha



Dr. Keesha Evers is a board certified Functional and advanced Ayurvedic medical practitioner as well as Doctor of Sociology, Advanced Registered Nurse Practitioner, Psychotherapist, energy worker and the founder and medical director of the Academy for Integrative Medicine Health Coach Certification Program.

She has built three million dollar + businesses from scratch using the tools she is teaching in this Abundance Program. Dr. Keesha is mission driven and believes we are all meant to shine brightly and live lives of purpose and service. Her Abundance tools are what keep her in the "flow" and in alignment with what she receives as Divine vision and answers to her daily prayerful inquiry to show her how to be an instrument in God's hands in the service of life here on earth.

Dr. Keesha has been in the medical field for over 30 years. After being diagnosed with rheumatoid arthritis—an incurable disease according to Western medicine—she discovered how to reverse autoimmunity using her Freedom Framework® Method, which she has now used with thousands of her own patients and teaches to her health coach students in her online certification program.

Dr. Keesha is a popular speaker, including from the TEDx stage, and the best-selling author of Solving the Autoimmune Puzzle: The Woman's Guide to Reclaiming Emotional Freedom and Vibrant Health and Your Libido Story: A Workbook for Women Who Want to Find, Fix, and Free Their Sexual Desire. You can listen to her Healthy YOU! Radio Show and find her books and programs at DrKeesha.com.



A Holistic Approach to Healing

Awareness. Wellness. Happiness.

Our health and recovery programs are designed with your individual genetic makeup, chemistry, and lifestyle in mind — to provide you with the best holistic coaching possible.

Consultations

Click below to schedule a consultation with Dr. Keesha, and begin the healing process!

Schedule My Consultation



We find the root cause of your symptoms.

A Holistic Approach to Healing

Awareness. Wellness. Happiness.

Our health and recovery programs are designed with your individual genetic makeup, chemistry, and lifestyle in mind — to provide you with the best holistic coaching possible.

Consultations

Click below to schedule a consultation with Dr. Keesha, and begin the healing process!

Schedule My Consultation



We find the root cause of your symptoms.

How Dr. KEESHA Can Help

Under the direction of holistic doctor, Elena Villanueva D.C., Modern Holistic Health offers natural, non-pharmaceutical health, combining research and clinical expertise to offer you effective, personalized, natural health solutions.

By carefully analyzing lab results, we can understand an individual's unique genetic makeup and body chemistry. Our data-driven holistic approach then allows us to create a customized health and recovery program designed specifically for you. Contact us today and begin the healing process!

Our 3-step approach

Testing & Analysis

After an in-depth review of your health concerns and goals, we use precision science to define the root cause of your symptoms, then design a personalized holistic healing plan based on your unique genetic makeup and body chemistry.

Lifestyle & Nutrition

We look at the entire picture when it comes to our clients. This means understanding the person as a whole. Lifestyle and nutrition are key when creating an effective action plan.

Plan & Implementation

After analysis, we'll discuss your options and create a holistic healthcare plan that is tailored to you. This plan is your blueprint to healing. We're with you through every step of the process to ensure optimal results.



“

If you are sick of harsh medications and are ready to live a healthier pain free life please call Dr. Keesha. She is wonderful and really cares about her patients making your life better.

– Cherie R.

Virtual Consultations

Healing wherever you are

Distance is no longer a hurdle to achieving better health. Our virtual consultations set you on a path to a healthier life from the convenience and comfort of your home. Whether you live local or international, our virtual services save you time, while providing the best holistic coaching possible.

If you have any questions about virtual health, we are happy to answer them for you and walk you through it. Give us a call at (512) 262-4861.



“

If you are sick of harsh medications and are ready to live a healthier pain free life please call Dr. Villanueva. She is wonderful! Within a few short weeks of working with her I was already noticing a difference in how I was feeling. I feel so lucky that our paths have crossed.

– Cherie R.

Start On Your Path Toward A Healthier Lifestyle

Contact Dr. V and schedule your consultation today! Call Modern Holistic Health at (512) 262-4861 or click below to book an appointment!

Schedule My Consultation





[WHAT YOU GET](#)

[REVIEWS](#)

[COURSE DESCRIPTION](#)

[CURRICULUM](#)

[ABOUT DR. KEESHA](#)



Whole Life Health

Credits available for free with live attendance. Or, study in your own time for just \$97 per class.

[Register Now](#)

[Explore The Curriculum](#)



6 months course from Dr. Keesha

Over the course of 6 months Dr. Keesha will cover how to apply an integrative health approach to the care of clients from womb to tomb. Each one-hour webinar will be delivered weekly for 3 weeks out of each of the 6 months of the course. The Whole Life Health course covers the entire life span; integrating Ayurveda, Functional Medicine, and Emotional Healing Tools.




WHAT YOU GET
REVIEWS
COURSE DESCRIPTION
CURRICULUM
ABOUT DR. KEESHA


 Nutritional Therapy Association
 IN PARTNERSHIP WITH



Whole Life Health

Credits available for free with live attendance. Or, study in your own time for just \$97 per class.

[Register Now](#)
[Explore The Curriculum](#)



6 months course from Dr. Keesha

Over the course of 6 months Dr. Keesha will cover how to apply an integrative health approach to the care of clients from womb to tomb. Each one-hour webinar will be delivered weekly for 3 weeks out of each of the 6 months of the course. The Whole Life Health course covers the entire life span; integrating Ayurveda, Functional Medicine, and Emotional Healing Tools.

Build Your Skills - Enhance Your Value - Create Better Client Outcomes

It's no secret that healthcare in America is broken.

7 of 10

are caused by chronic disease

86%

Of healthcare spending is on chronic disease

Opioid abuse is rampant

De

How to fix it?

It's time for natural health practitioners to move beyond symptom management to addressing the root causes of health issues to create real, long-term improvement in the lives and health of our clients.

Based on the cutting-edge science of the west and ancient wisdom from the east, we will give you the knowledge and tools you need to do just that.

1 in 3
Americans has prediabetes or diabetes

Our 6-month curriculum includes:

- Conscious conception.
- Healthy children and healthy families.
- Genetic screening and other Advanced Labs.
- Functional Medicine and Holistic Wellness Models.
- Nutritional Testing and Planning
- Creating mind-body balance for clients.
- A deep dive into Ayurveda and a new method of assessment.
- Mind-body-spirit tools.
- The enneagram.
- Conscious transitions.

Invest In Yourself - Continue Your Education!

ENROLL TODAY

[Register Now](#)
[Explore The Curriculum](#)

What you get ?

- To guide your clients towards health, you will learn not only functional wellness, but also Ayurveda, functional nutrition and detoxification, mind-body Psychology, and Sexology.
- You'll also learn how Dr. Keesha uses laboratory testing and scientifically proven protocols that are based on over 35 years of medical education and experience.

heal from:

Autoimmune disease

Obesity

Mood disorders

Past trauma

Addiction

Digestive disorders

Chronic fatigue

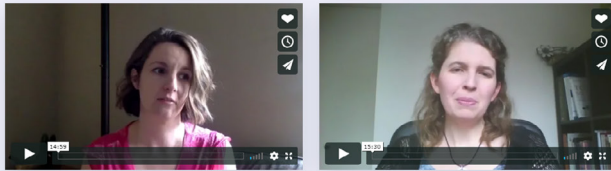
Hormone imbalance

Even cancer

Earn 18 CEUs with just 3 1-hour teaching from master integrators



What others are saying about the Academy for Integrative Medicine and Dr. Ewers' teaching:



I decided to look into becoming a certified integrative health coach as I was turning in a manuscript for a book on gut wellness and stress to my

I have been a bodyworker with specialties in visceral and gut health and healing trauma for decades and it was clear that my clients needed more support. Their doctors were not helping them beyond shortened visits and mostly medication prescriptions. Most people it seemed were at a loss as to how to feel better on any level.

As I was searching through the many health coach courses available due to the explosion in the field, I came upon Dr. Keesha Ewers fantastic book: Solving the Autoimmune Puzzle. I couldn't put it down. It was the first time trauma was really spoken about as a piece of the health puzzle. It was integrative and very clearly and lovingly written. I was thrilled when I realized that Dr. Ewers came from a western medical background and had her PhD in psychology, a masters in Ayurveda and was a functional medicine practitioner. I knew she was my teacher.

[Read more](#)

“

"I am very excited to be sending this final exam to you. This is the most interesting study I have ever done and wish I could have taken it 40 years ago!! Actually, couldn't have done it because brain fog prevented a lot of learning ability. Thanks to you and this program I am able to sit at my computer, listen to a seminar and act on it like never before. And it is only getting better!"

- Linda Berg

“

"Our country's history and particularly the events of the past year have solidified a certainty that this world is in desperate need of the feminine. Of feminine energy, feminine strength, feminine intelligence and feminine wisdom. For me to remain within the contemporary approach to medical practice, even FM, would not free me. I would remain within its very real and limiting dynamics.

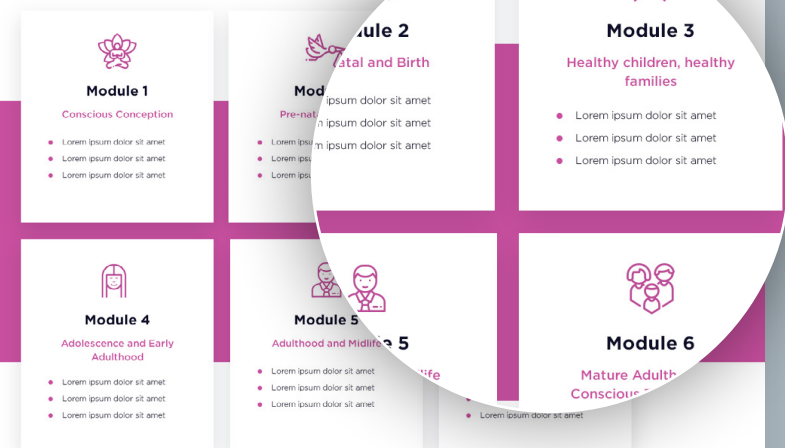
- Joi

COURSE DESCRIPTION

The Certification Course includes:

- Six months of webinars that are hosted 3 weeks out of each week with Dr. Keesha Ewers.
- Class materials and resources made available to all participants (licensing not required).
- Protocol guides and worksheets.
- CE Credits for each end class quiz that is successfully completed.

Curriculum



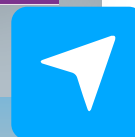
ABOUT DR. KEESHA



Dr. Keesha Ewers, the Mystic Medicine Doctor, is an integrative medicine expert, Doctor of Sexology, psychotherapist, medicine woman trained in plant medicine from Peru, and the founder and medical director of the Academy for Integrative Medicine Health Coach Certification Program.

Dr. Keesha has been in the medical field for over 30 years. After conducting the HURT Study in 2013 (Healing Un-Resolved Trauma), she developed the HURT Model for understanding how past childhood trauma impacts adult health. This led to the creation of the You Unbroken online program for patients to heal their own trauma and the Mystic Medicine deep immersion healing retreats she leads at her home on San Juan Island, WA.

[Read more](#)





TEPEDINO

KERRY TEPEDINO'S ADRENAL & HARMONAL

TESTING & CONSULT BREAKTHROUGH


[CLICK HERE TO SIGN UP TODAY](#)

Valued at \$4000

EVENT SPECIAL PRICE

\$ 497






KERRY TEPEDINO'S ADRENAL & HORMONAL

TESTING & CONSULT BREAKTHROUGH


CLICK HERE TO SIGN UP TODAY

Valued at \$4000 **EVENT SPECIAL PRICE** **\$ 497**




Enough is enough!

Women's health expert Kerry Tepedino has dedicated her life to helping women say "ENOUGH IS ENOUGH! It's time to finally feel good in my body again!"




Latest scientific testing

She and her team of expert female health coaches have combined the latest scientific testing with personal and emotional tools that Kerry has developed in over a decade of helping women all over the world.



Hormones and adrenal responses


In this package you'll not only get a detailed, scientific understanding of how your hormones and adrenal responses are impacting your health



Work directly with Kerry and her team

But you'll also work directly with Kerry and her team to identify real, actionable goals that you can achieve and create a plan you can use to achieve your goals.


WHAT DOES YOUR PACKAGE INCLUDE?



500 \$ VALUE

SPECIALIZED ADRENAL & HORMONE


The latest tests will allow the affects on your health to be easily and accurately identified



500 \$ VALUE

INDIVIDUALIZED TEST REPORT


Don't settle for one-size-fits-no-one health advice. Get results and recommendations that are specific to you.



1000 \$ VALUE

PERSONALIZED CALL WITH EXPERT BASED ON TEST RESULTS


Learn exactly how to adjust your life based on your test results to achieve personal, optimal health that works for you and your lifestyle.



1200 \$ VALUE

2 TICKETS TO THE BELIEVE EVENT


This is number 1 event for women to come together, learn about their health and move forward together.



800 \$ VALUE

30 MINUTE BREAKTHROUGH CALL

Don't just treat the body, learn how you can nurture your mind, emotions and spirit and move forward as a whole, happy person.




TOTAL WORTH \$4000!

EVENT SPECIAL PRICE ONLY \$497

CLICK HERE TO SIGN UP TODAY

ON-THE-SPOT SIGN UP BONUS

30 Minute Vip Emotional Eating & Weight Loss Breakthrough Call With Kerry!







What if you could get the perfect food and diet plan for the rest of your life by answering one simple question:

What food plan do your genetics need?





What if you could get the perfect food and diet plan for the rest of your life by answering one simple question:

What food plan do your genetics need?



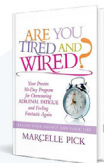
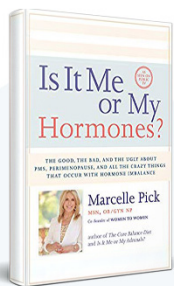
10
years
experience



Introducing the Genetic Nutrition and Weight Loss Panel

From international bestselling weight loss, health and fitness author Marcelle Pick comes a groundbreaking new approach to women's health and weight loss. By combining her decades of experience with the latest advances in genetic mapping and medical science, Marcelle is finally helping women all over the world find answers to their questions about weight, health and hormones and why their diets aren't working.

First OZ NBC ELLE PBS THE HUFFINGTON POST Women's World GLAMOUR



GET YOUR ANSWERS

Is It Me Or My Genes?



Will low carb actually cause me to gain weight?



Why doesn't calorie counting work for me?



Why do I feel depressed when I try low fat diets?



I lost a lot of weight last year, why is it coming back?

Join Now for \$ 695

With genetic science it's now finally possible to get definitive answers and reasons why!

Every year an estimated 45 million Americans go on a diet. As a country we spend billions trying to find the keys to our health and weight. Now, thanks to new advances in medicine we now understand better than ever what the true keys to health are and exactly why some diets work for some people and not others. The key is in our genetics, in recognizing that there is no one-size-fits-all approach to health. Depending on your genetics a diet and lifestyle that will give someone else health and happiness could actually be sabotaging your weight, your hormones and even your mood!

45
million

What you get from the genetic nutrition and weight loss panel



A Map To Health - You'll get an easy to use saliva kit to send to our lab. From your test, you'll receive a report detailing your exact genetic factors affecting you and your metabolism, nutrient absorption, and even insulin resistance. Your report will be yours to keep so that you can refer back to it anytime Marcelle.

One-On-One Health Coaching - Once you have your results, you'll get with Marcelle to review your results and give you detailed information in perfect alignment with your body's needs. These plans have been a more weight, and, most importantly, keep it off.



A Health Plan For Life - At the end of your coaching session, you'll need to build a health plan that is based on your unique understanding of your personal nutrition and genetics. Your genetic markers and expressions that will help you reach your goals.



consultation
your diet to be
lose 33%

Marcelle you'll have all the information
Working with Marcelle...





A Holistic Approach to Healing

Awareness. Wellness. Happiness.

Our health and recovery programs are designed with your individual genetic makeup, chemistry, and lifestyle in mind — to provide you with the best holistic coaching possible.



We find the root cause of
your symptoms.

Consultations

Click below to schedule a consultation
with Dr. Villanueva, and begin the
healing process!

[Schedule My Consultation](#)





A Holistic Approach to Healing

Awareness. Wellness. Happiness.

Our health and recovery programs are designed with your individual genetic makeup, chemistry, and lifestyle in mind — to provide you with the best holistic coaching possible.



We find the root cause of your symptoms.

Consultations

Click below to schedule a consultation with Dr. Villanueva, and begin the healing process!

[Schedule My Consultation](#)

How Dr. Elena Can Help

Under the direction of holistic doctor, Elena Villanueva D.C., Modern Holistic Health offers natural, non-pharmaceutical health, combining research and clinical expertise to offer you effective, personalized, natural health solutions.

By carefully analyzing lab results, we can understand an individual's unique genetic makeup and body chemistry. Our data-driven holistic approach then allows us to create a customized health and recovery program designed specifically for you. Contact us today and begin the healing process!



Testing & Analysis

After an in-depth review of your health concerns and goals, we use precision science to define the root cause of your symptoms, then design a personalized holistic healing plan based on your unique genetic makeup and body chemistry.



Lifestyle & Nutrition

We look at the entire picture when it comes to our clients. This means understanding the person as a whole. Lifestyle and nutrition are key when creating an effective action plan.



Plan & Implementation

After analysis, we'll discuss your options and create a holistic healthcare plan that is tailored to you. The plan is your blueprint to healing. We're with you through every step of the process to ensure optimal results.



If you are sick of harsh medications and are ready to live a healthier pain free life please call Dr. Villanueva. She is wonderful and really cares about her patients and making your life better.



- Cherie R.

Healing wherever you are

Virtual Consultations

Distance is no longer a hurdle to achieving better health. Our virtual consultations set you on a path to a healthier life from the convenience and comfort of your home. Whether you live local or international, our virtual services save you time, while providing the best holistic coaching possible.

If you have any questions about virtual health, we are happy to answer them for you and walk you through it. Give us a call at **(512) 262-4861**.



Within a few short weeks of working with her, I was already noticing a difference in how I was feeling. Our paths have crossed, and I look forward to continuing my health journey with her.



- Cassie B.

Start On Your Path Toward A Healthier Lifestyle

Contact Dr. V and schedule your consultation today! Call Modern Holistic Health at **(512) 262-4861** or click below to book an appointment!

[Schedule My Consultation](#)





Hello from Dr. Michelle Sands, ND

Welcome to the Perimenopause Summit, I am so excited you'll be attending and can't wait to start sharing the wisdom and insight of our dozens of speakers with you.

Also, as a thank you for attending the summit, I want to help you get a head start on optimizing your health by giving you my **7-Day Hormone Recharge**® as a free gift.

Enter Your Details to receive your free copy:



YES! I WANT →





Hello from Dr. Michelle Sands, ND

Welcome to the Perimenopause Summit. I am so excited you'll be attending and can't wait to start sharing the wisdom and insight of our dozens of speakers with you.

Also, as a thank you for attending the summit, I want to help you get a head start on optimizing your health by giving you my **7-Day Hormone Recharge** as a free gift.

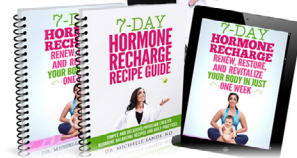


Enter Your Details to receive your free copy:

Enter Your name

Enter Your Email

YES! I WANT →



As a licensed Functional Medicine Physician and Doctor of Naturopathic Medicine, #1 Best Selling Author and founder of the GLOW protocol, I have dedicated my life to sharing the secrets of ageless health with women across the country. I'm passionate about helping women harness the power of nature to optimize their genetic expression, allowing them to unlock their full potential and live vibrantly. I do this by focusing not just on your physical health, but also your mental, emotional and spiritual wellbeing.



Michelle showed me how to have a physical breakthrough. But more importantly, having that physical breakthrough has taught me how to have a mental and spiritual breakthrough. It is all in the same, and Michelle has helped me understand that.

Danielle G.



Losing that stubborn



Improving moods, mental



Having boundless energy



Heightening your sex drive



Improving skin

lost 3-5 pounds of fat

Improved moods, mental confidence



Successful Clients

This amazing lifestyle guide is the secret to how my MOST SUCCESSFUL CLIENTS achieve and maintain their results. It includes a simple step-by-step system for boosting energy, improving moods, reviving your libido, heightening mental clarity, and energizing your metabolism to help you lose weight.



It was delicious, and I learned new recipes that I'll eat for the rest of my life. (By following the system detailed in the 7-Day Hormone Recharge Guide) my back eczema cleared up, the skin on my face cleared up, my food-comas went to almost non-existent, and I saw numbers on the scale that I hadn't seen since before I turned 30, that I never thought I'd see again!

Camille H.



FREE DOWNLOAD



Special Price

Normally, the 7-Day Hormone Recharge Guide and cookbook are priced together at **\$97**. But as I mentioned earlier, because of your interest in the SUMMIT NAME, you qualify to receive a downloadable copy as my complimentary gift. Just confirm your details below, and we'll send it straight to your inbox.

I'm excited for you and can't wait for you to renew, restore and revitalize your body! And please let me know if you have a favorite recipe, or there's something in the program that really resonates with you, when we see each other at the summit!

See you at the
Perimenopause Summit!

Dr. Michelle Sands, ND



Enter Your name

Enter Your Email

YES! I WANT →



GLOW Natural Wellness | Terms and Conditions | Privacy Policy

All Rights Reserved Copyright © 2019



Get Your Human Performance Blueprint Today!

Truly Personalised Approach to You

Apeiron Genomic testing is the ideal way to achieve a truly personalized approach to lifestyle for optimized human performance.

Genetic analysis is the cutting edge of healthcare, identifying the unique influences on your health and performance that need to be taken into account in order to achieve optimal health and performance.

Order Now



What We Do

Epigenetic Performance Coaching is the key to unlocking your limitless genetic potential.



Personalized Reports

You get an easy to read 45-page report that covers Nutrition, Supplementation, and Sleep. These reports look at over 200 genetic variants that make you unique. This data can then interpreted by your personal Apeiron Certified Epigenetic Performance Coach.



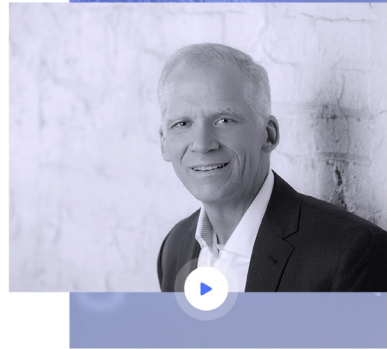
Get Your Human Performance Blueprint Today!

Truly Personalised Approach to You

Apeiron Genomic testing is the ideal way to achieve a truly personalized approach to lifestyle for optimized human performance.

Genetic analysis is the cutting edge of healthcare, identifying the unique influences on your health and performance that need to be taken into account in order to achieve optimal health and performance.

Order Now



What We Do

Epigenetic Performance Coaching is the key to unlocking your limitless genetic potential. Discover how this new paradigm of health and wellbeing is the true cutting edge of transformation and optimization.

We combine the latest in genetic and epigenetic science with physiology, biochemistry, brain/peak performance, and other lifestyle factors for personalized and precise solutions so you can access your full potential.



Personalized Reports

You get an easy to read 45-page report that covers Nutrition, Supplementation and Sleep. These reports look at over 200 genetic variants that make you unique. This data can then be interpreted by your personal Apeiron Certified Epigenetic Performance Coach.



Coach Review/Action Plan

Here is the real value of this offer. Not only do you get your raw data and your 45-page report, you also get one hour with one of our Epigenetic Performance Coaches. Information without an action plan is only information. Your coach can provide the next steps to begin your optimization process.



Your Personal Blueprint

Using a simple cheek swab, you submit your DNA specimen. In approximately 2 weeks, you will receive your raw genetic data covering nearly 750,000 genetic variants. This is your data; it is not shared or sold. This is YOUR raw data and you can use it to do your own research as well.

A Sample Generic Report

Nutrition, Supplementation, and Sleep

Some Numbers

14

Days

750k

Genetic variants

100

Certified coaches

For Clients

AJ worked hard to keep himself healthy. He controlled his diet, took recommended supplements and worked out, but just wasn't seeing the results that he knew he could achieve. Listen to the amazing progress he achieved in a few short weeks after getting his epigenetic testing. He worked with one of our certified epigenetic human performance coaches to implement the knowledge he gained.

"When you know the unique factors of your personal Human Performance Blueprint, you can unlock the secrets of your own potential and become the optimized person you are meant to be!"

— AJ Eger



What To Do Now

You're just a few clicks away from getting on the path to truly personalized, optimal health.

Pick Your Report

STANDARD

\$ 397

45 pages about genetic influences on you including:

- Nutrition and Diet Genomics
- Personalized Supplementation
- Sleep Genomics

Everything you need to identify ideal lifestyle choices customized to you.

PREMIUM

\$ 600

Extra 35 pages with all the information from the Standard report plus:

- Environmental and Detox Genomics
- Athletic Performance Genomics
- Hormone Genomics

The first step to achieve fully fine-tuned health performance.



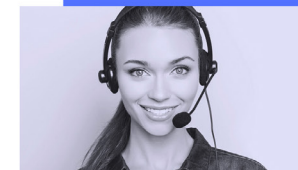
Send Us Your Sample

Your kit will arrive with everything you need to quickly and safely send your sample to our state-of-the-art facility and we'll send you your results.

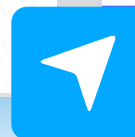
Schedule Your Coaching Call

You'll get a full hour with one of our certified Epigenetic Coaches who will walk you through every page of your report and explain exactly how you can update your lifestyle to achieve optimal performance.

You'll create personalized goals and steps you can take to reach them so that you can take full advantage of the knowledge at your disposal.



Are you ready to experience the benefits of a Personalized Genomics lifestyle?



You can rely on us!



You are looking for a design and we are willing to help. So, we created many flexible plans to suite your need.



Per Project

Excited to get your work done on time? Once we receive all the details, our team will get to work on it then you will receive your work.

- ✓ One design but many designers work on it.
- ✓ Get early preview and 2 rounds of edits before final delivery.



Per Hour

Instantly track efforts and time of your ongoing projects. Guarantee the quality you receive and avoid the flaw of freelancers.

- ✓ Project management for all ongoing projects.
- ✓ 24/7 Availability.
- ✓ Unlimited projects at a time.
- ✓ Unlimited rounds of edits.



Unlimited

Add a design department for your company! Take your business to a brand-new level with a price of less than a part time designer.

- ✓ All types of services.
- ✓ One project at a time.
- ✓ Unlimited rounds of edits.
- ✓ Flexible contract for a month or for a year.
- ✓ Less than hiring a part time designer.

[GET YOUR QUOTE NOW](#)

